

Trauma and the Brain/Disabilities and Sexual Violence

Complete the registration form below to register for the training.

Name

Agency

Title

Address

City/State/Zip

County

Phone

Email

No cost for registration.

SART Member: Y N

Registration Deadline: 9/8/15

Send to: CONTACT

Attn: Donnel Horn
PO Box 2963
Huntington, WV 25728
Phone: 304-523-3447
Fax: 304-523-0558

sartcoord@contacthuntington.com

Accommodations needed:

Send To: CONTACT

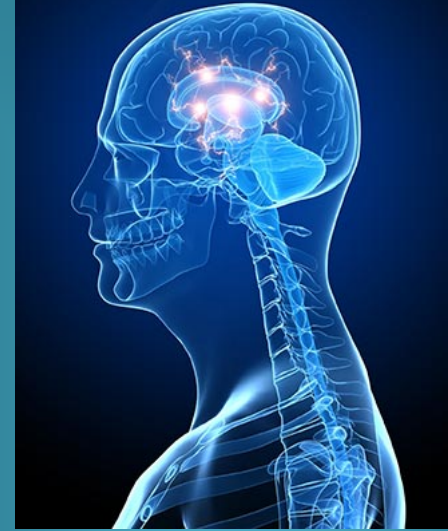
Attn: Donnel Horn

PO Box 2963

Huntington, WV 25728

Phone: 304-523-3447

Fax: 304-523-0558



Trauma and the Brain: How the Effects of Trauma Turn Investigations Upside Down/Disabilities and Sexual Violence

Thursday September 10, 2015

LOCATION:

**TRINITY EPISCOPAL CHURCH,
520 11TH STREET HUNTINGTON, WV
8:00 A.M. – 5:00 P.M.**

Sponsored by:

CONTACT Rape Crisis Center, Huntington, WV

West Virginia Foundation for Rape Information and Services (WV FRIS)

Funding provided by grant no. 2014-WE-AX-0034, G150632, awarded by the Office on Violence Against Women, U.S. Dept. of Justice. The opinions, findings, conclusions and recommendations expressed in the publication are those of the author(s) and do not necessarily reflect the views of the Office on Violence Against Women, U.S. Dept. of Justice.

Agenda

8:00a.m. - 9:00 a.m. Sexual Victimization and Persons with Disabilities

- Perpetrator Information
- Risk Factors/Vulnerabilities
- Barriers to Reporting
- Disability, Violence, and Survival: A Personal Story
- Impacts of Sexual Assault

9:00a.m. – 10:00 a.m. Dignity of Risk/Readiness to Serve

- Buttons and Triggers: Person 1st Language
- Effective Communication
- Accommodations

10:00 a.m. – 10:15 a.m. Break

10:15 a.m.-11:00 a.m. Mental Health Challenges

- What It Is
- Prevalence/Stigma
- Labeling
- Tips and Strategies
- Barriers
- Scenario Discussion

11:00 a.m. – 12:00p.m. Making Change

- Resources and Interpreters Fund
- Reaching Persons with Disabilities
- Policy change(s)

12:00-1:00 Lunch Break

1:00-2:00 Brain Basics: The Trauma Response

2:00-2:45 Accurate Testimony: How Differences in Memory Storage Alter Investigations

3:00-3:15 Break

3:15-4:00 Supporting Trauma Survivors Through the Recovery Process

4:00-4:30 Collaboration and Adoption of Trauma-Informed Practice

4:30-5:00 Questions/Evaluations

Trauma Survivors don't store memories in the same way as other witnesses or crime victims.

Given this reality, we must adapt our investigative and therapeutic practices. Using the most current science on how traumatized brains function, participants will learn how to work with trauma survivors. This knowledge will help with generating the most accurate testimony, the best judicial outcomes, and the most thorough emotional understanding of what trauma survivors go through.

Who Should Attend

Advocates, educators, rape crisis center staff, domestic violence center staff, counselors, social workers, SART members, law enforcement, nurses, first responders, and any service providers and/or agency representatives who aid in serving survivors of sexual assault or stalking.

Continuing Education

Social Work: 9 Hours

Nursing: 9 Hours

Counseling: 7.5 Hours

DV Advocates: 8 Hours

Law Enforcement: 8 LETs

For further information or questions contact:

CONTACT

Attn: Donnel Horn

PO Box 2963

Huntington, WV 25728

Phone: 304-523-3447

Fax: 304-523-0558

sartcoord@contacthuntington.com

Learning Objectives

This training will generate discussion about how all professionals who intersect with a sexual assault survivor can adjust their practice to improve outcomes—whether they are increased conviction rates, more supportive counseling, more accurate witness testimony, or better advocacy.

Utilizing the most recent literature, **participants will learn about how trauma affects memory, emotional response, and recovery.** These lessons will also focus on how law enforcement can improve investigative practices for cases involving trauma survivors, particularly survivors of sexual assault.

Through collaborative activities you will identify ways the various agencies, organizations, and systems can work together to better serve survivors of trauma.

Persons attending this training will be better able to:

- Understand counterintuitive behaviors associated with surviving trauma
- Examine the relationship between trauma and memory
- Foster multidisciplinary collaboration